

#whdentalwerk



video.wh.com

Now at
your dealer
or wh.com



Biosecurity 100%, Reliable, Economical



ms

Safe, easy and cost-effective sterilization

The new **MS** provides dentists with a high-quality yet affordable sterilizer, which prioritises biosecurity and cost-effective running, as well as speed and flexibility. The MS has been developed in line with US standard ANSI/AAMI ST55:2010 for table-top steam sterilizers.



Link to product videos



Optimized
for efficient and faster work processes

Flexibility
for better cycle selection

Large capacity
for practices with a high volume of work

Ergonomic
for greater ease of use



High biosecurity standards
for your peace of mind

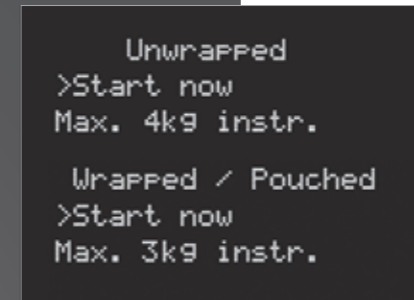
Anti-dust filter
for extended service intervals

Modular legs
for installation in smaller spaces (depths of 45 cm)

Cutting-edge design
for simple cleaning of the equipment and a modern appearance



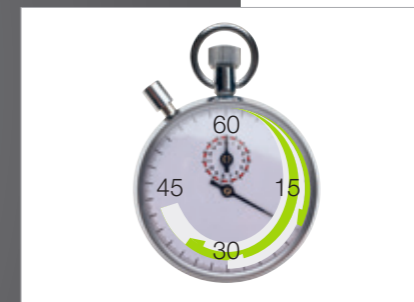
High biosecurity standards
Guaranteed by the closed-door drying process with anti-bacterial filters and the use of clean water in each cycle.



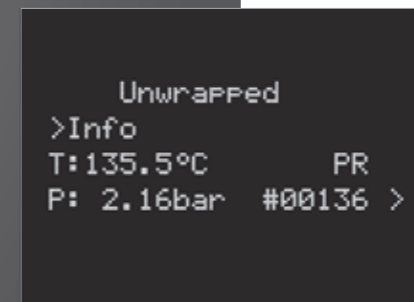
Flexibility and time-saving
The MS has cycles for both packaged and unpackaged products, with an automatic drying process.



Large capacity
With its 22-litre chamber and room for five trays, the MS offers greater load capacity for practices with high volume of work.



Optimized workflow
Program the cycle to start at a set time to improve the efficiency of your workflow.



Safety first
Pressure and temperature controlled mechanically and electronically.



Ergonomic
The automatic filling and draining functions for the water tanks and the automatic door lock improve ergonomics and save you time.

Technical data

MS sterilization cycles

	Unwrapped	Wrapped	Gentle
Temperature:	134 °C	134 °C	121 °C
Holding time:	6'	6'	15'
Total cycle duration*:	21–25'	38–62'	55–59'
Max load:	4 kg of unwrapped instruments	1–3 kg of wrapped instruments**	1 kg of wrapped heat-sensitive instruments or 4 kg of unwrapped instruments

* Total cycle duration – the times quoted are for the 220 V model and vary depending on the initial conditions of the chamber (hot – cold).

The duration of the cycle may vary depending of the type and weight of the load, voltage, etc.

** The default drying guarantees the sterilization and drying of 3 kg in 62' total time, placing 1 kg per tray.

The drying time may be manually reduced when processing 1 kg thus obtaining a total cycle time of 38'.



	MS	
Type:	MS 22	
Chamber size:	22 l	
Power supply:	200–240 Vac 50/60 Hz; 8,75 A	100–125 Vac 50/60 Hz; 15 A
Power consumption:	1.75 kW	1.6 kW
Dimensions overall (W x H x D):	450 x 435 x 599 mm	
Weight (empty):	38 kg	
Mean sound levels (L_{WA}):	63 dB	
Main/Used water tanks:	4 / 3.5 l	
Working range:	7 cycles	
Usable space in chamber (W x H x D):	195 x 195 x 390 mm	
Connection type:	Serial port for printer + automatic water filling connection (optional)	

MS sterilizers were designed, certified and validated with the most stringent Directives and Standards:

93/42/EEC	Medical Device Directive	ANSI/AAMI ST55	Table-top steam sterilizers	IEC 61010-1	Safety requirements
2014/68/EU	Pressure Equipment Directive	IEC 61326-1	Electromagnetic compatibility	IEC 61010-2-040	Specific requirements for steam sterilizer

Manufacturer:

W&H Sterilization Srl.
Via Bolgara, 2
24060 Brusaporto (BG), Italy
t +39 035-66 63 000
f +39 035-50 96 988
office.sterilization@wh.com
wh.com