

#whdentalwerk



video.wh.com

Now at
your dealer
or wh.com



Electric motor

**Functionality
meets comfort**

Powerful. Versatile. Small.



Perfect balance of power and ergonomics

W&H brushless electric motors offer impressive functionality and comfort. They are particularly small and surprisingly lightweight, are comfortable to hold and, in addition to the consistently high power, also score extra points with features such as LED technology, long service life and quiet operation.



Particularly small

The comparison shows: the W&H electric motors are no larger than a matchbox.

Compatible

ISO short coupling: can be used with all conventional straight and contra-angle handpieces, including Short Edition.



Consistently high power

High power, reliable durability and a broad spectrum of speeds from 100 to 40,000 rpm.

25% lighter, 15% shorter

Combine the EM-12 L or EM-11 L with the contra-angle handpieces from the Synea Vision Short Edition range for a considerably shorter and noticeably lighter complete system. This makes it possible to satisfy the highest ergonomic demands and effectively avoid fatigue, even when working for extended periods of time.



Perfectly balanced

Short, slim and lightweight: ideal weight distribution means the electric motors from W&H are perfectly balanced in your hand.



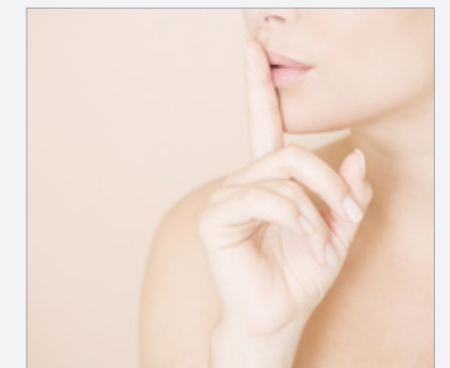
Improved visibility with LED light

The LED technology integrated in the motor enables the treatment site to be illuminated as bright as day.



Low maintenance and preserved value

The long-lasting brushless drive means reduced service and maintenance costs plus increased service life.

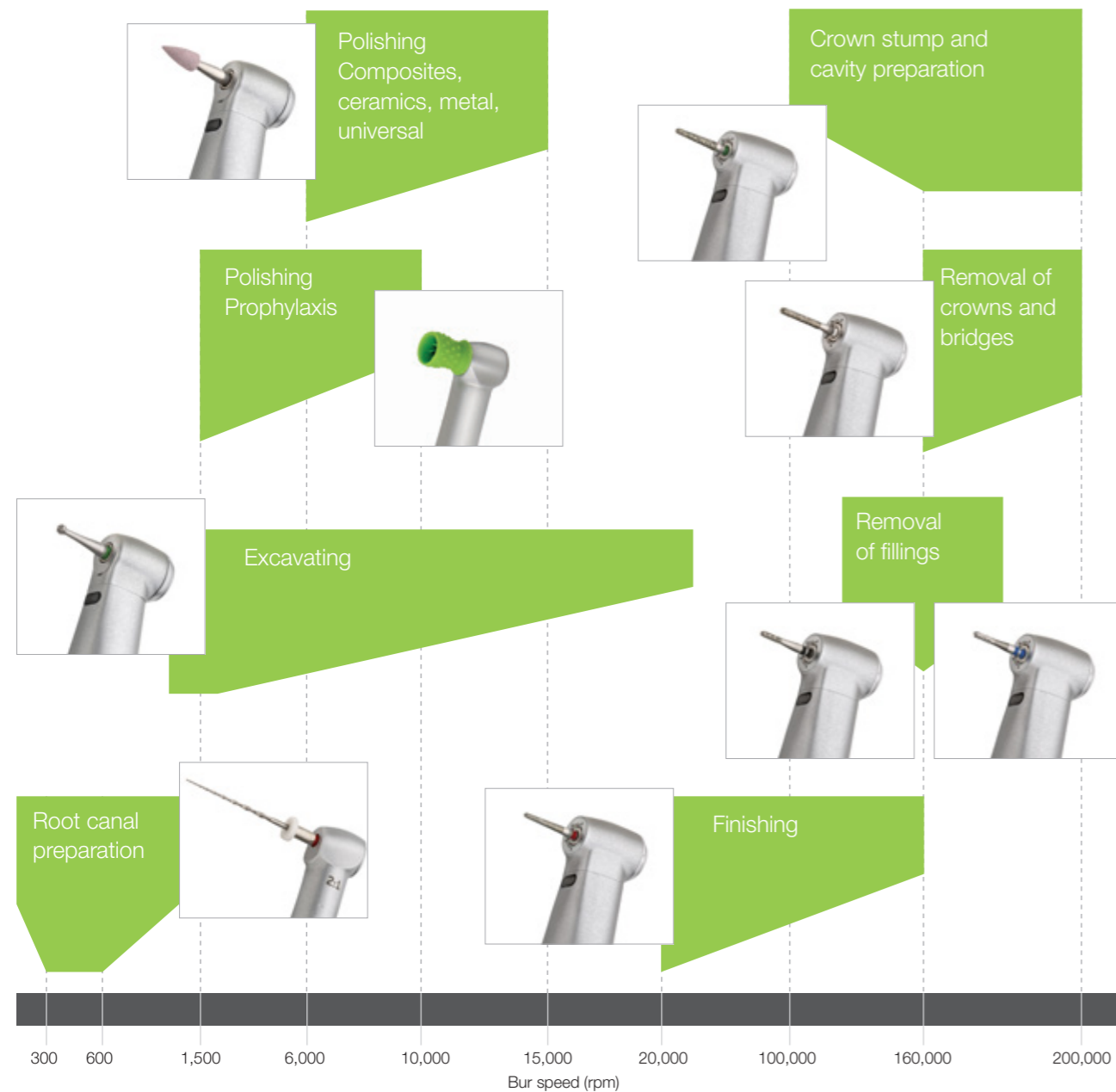


Quiet and low vibration

Extremely quiet and largely vibration-free operation thanks to sensor-controlled drive technology.

Range of applications with electric power

You can prepare, excavate, polish and even perform endodontic treatments with the EM-12 L: simply select the transmission instrument, set the speed and work with the recommended bur speeds. For optimal treatment results in a wide range of applications.



An ingenious system

The W&H EM-12 L electric motor is ideal for integrating into your individual workflow. You can either choose the smart add-on with flexible installation options or take advantage of a built-in solution with convenient full integration into your dental unit.



Add-on
If you use the add-on as a tabletop device, the sterilizable tray offers an additional storage area.



Removable display
The display can be removed from the add-on and can be positioned independently from the control module.



Installation options
You can also install the add-on below or on the side of the table used for your dental unit.



Built-in solution
Select unit manufacturers offer both W&H electric motors as a fully integrated drive solution as part of the overall system. Operation is simple and convenient via the control panel of your dental unit. Ask W&H or your unit manufacturer about the W&H electric motor range as a built-in solution.

The choice is yours

With or without the endo function, the EM-12 L electric motor is always reliable and capable. Equip your dental unit with innovative drives and new functionalities from W&H. W&H's straight and contra-angle handpieces are suitable for a wide range of applications.



Built-in motor with control knob

The EM-12 L for restoration, prosthetics and prophylaxis has a speed range of 2,000 to 40,000 rpm.



Built-in motor with display

Easy operation via the display enables precise speed setting.



Built-in set with two motors

One display and two motors mean you have at your disposal the perfect contra-angle handpiece for both low and high speed applications.

Endo systems for all situations

W&H endo systems for automated preparation of the root canal for even safer and more precise preparation.



Integrated endo function

Expand your range of treatments: the integrated EM-12 L with endo function has a speed range of 100 to 40,000 rpm. The electronic torque control minimises the risk of file breakage.

Technical data



Electric motor	EM-12 L	EM-11 L
Speed range*:	100–40,000 min ⁻¹	2,000–40,000 min ⁻¹
Maximum power:	59 W	
Length (effective, without ISO connection):	31.55 mm	
Weight:	57 g	
Noise level:	43 dB (A)	
Light:	LED	
Spray:	internal	
Cooling air:	6–8 NI/min	
Direction of rotation:	forward/reverse operation	
Instrument coupling:	ISO 3964 (short) compatible	
Warranty:	24 months	
Endo function:	yes	no

* Speed range dependent on motor/system variants

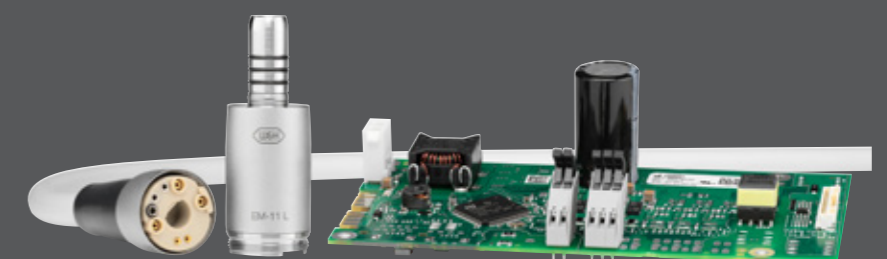


Add-on control unit for EM-12 L	MF-100
Speed range:	2,000–40,000 min ⁻¹
Supply voltage:	100–240 V, 47–63 Hz
Dimensions (height × width × depth):	92 × 156 × 211 mm
Weight:	1.06 kg
Warranty:	24 months



EM-11 L built-in set

The EM-11 L is the latest fully integrated drive solution from W&H. It was specially developed for restorative and prosthetic applications, but also features an LED light and is just as small, lightweight, quiet, powerful and durable as the EM-12 L.



Electric motor EM-12 L

Functionality meets comfort



Made in
AUSTRIA

Expert tip

Dr Sergio Ariosto Hernández Delgado

Mexico City, Mexico

An electric motor with high-speed contra-angle handpieces is the best choice for the preparation of CAD/CAM treatments:

“The most important benefits that I can comment on from my own experience are the following: control of the preparation, precise, neat and uniform margins that are easy to scan. Less vibration compared with turbine handpieces, thus less fatigue and force required during the preparation procedure.”

Read the full interview at [wh.com](https://www.wh.com)

Manufacturer:

W&H Dentalwerk Bürmoos GmbH

Ignaz-Glaser-Straße 53, Postfach 1

5111 Bürmoos, **Austria**

t +43 6274 6236-0

f +43 6274 6236-55

office@wh.com

[wh.com](https://www.wh.com)