

#whdentalwerk
f @ in ▶
video.wh.com

Now at
your dealer
or wh.com



Strong

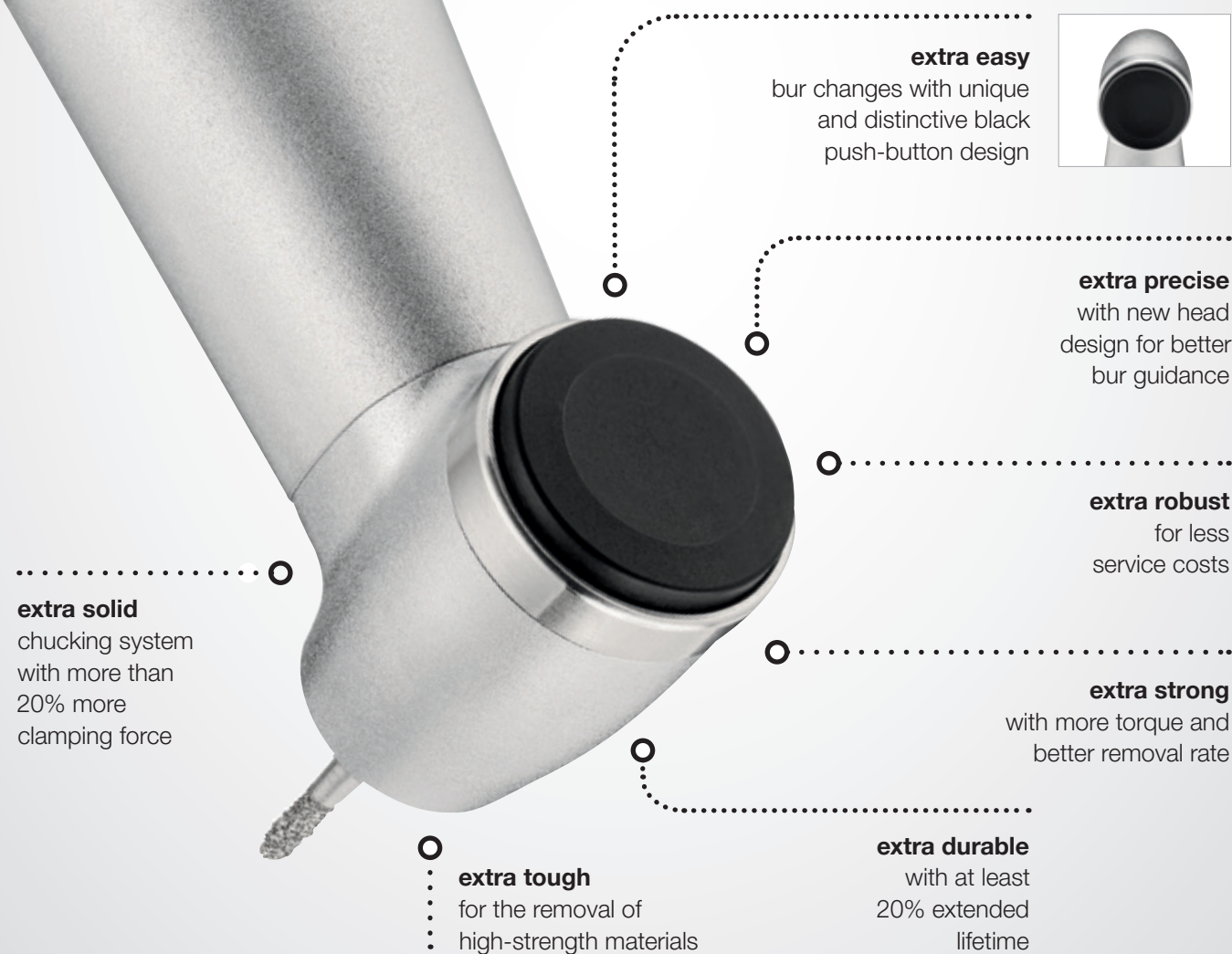
For the hardest materials.
Experience the difference.



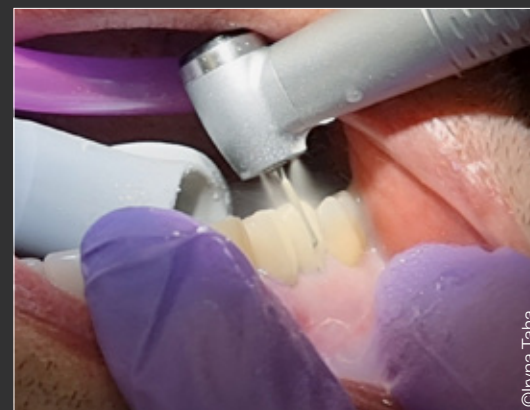
syneo
POWER EDITION

High-performance handpieces for high-strength materials

The Synea Power Edition is especially designed for heavy-duty applications, such as the removal of decayed materials, cavities, fillings, crowns, and bridges. These new high-speed contra-angle handpieces with a unique black push-button are built extra strong and durable. They are the optimal solution for advanced ceramic material like zirconia that is increasingly being used in restorative dentistry. Thus, this up-to-date addition to the Synea family is the perfect complement to your existing handpiece range.



Zirconia as restorative material: pros and cons



Zirconia-based dental restorations are becoming used more commonly. However, limited attention has been given to the difficulties experienced, concerning cutting, in removing the restorations when needed. (1)

Dental zirconia has posed a problem in removal [...] due to its high flexural strength and hardness. Attempts to section dental zirconia often result in destroying multiple burs, loss of chair time, and frustration by the dentist and patient. (3)

[...] cutting of Zir [Zirconia] took about 1.5- and 7-fold longer than cutting of LD [lithium disilicate glass-ceramic] and L [leucite glass-ceramic], respectively. (1)

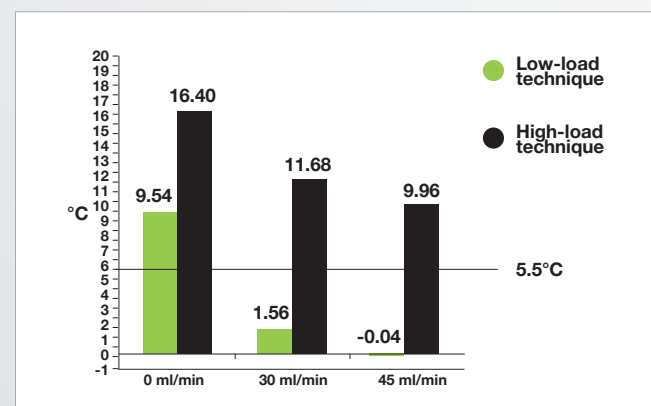
Zirconia

Optimal Cutting: Feel the Difference. The removal of zirconia restorations is a demanding procedure. Conventional contra-angle handpieces are struggling to keep up with cutting performance. Applying even more load to improve removal rate wears out the bur much faster (1) and may risk thermal damage to vital teeth (2). With the Synea Power Edition cutting efficiency is improved without having to apply extra heavy loads.

Higher power. Lower loads. The extra strong handpieces take on high-strength material in less time and with less effort compared to standard contra-angle handpieces. With an optimized gear ratio, they ensure the optimum bur speed and provide the additional torque required to cut hard materials efficiently.

“This allows for less bur chatter, skipping and skiving and creates more precise cuts.”

Dr Robert Stanley, The Stanley Institute



Mean value of temperature variation in relation to the 5.5° C limit line

Generated heat vs. load-technique

Studies show that temperature increases far above the critical 5.5° limit when using a high-load technique, even with higher water flows. These findings confirm the necessity of a high water flow as well as a low-load cutting technique. (2)

Studies show that

[...] high cutting force will decrease cutting efficiency on zirconia, rather than improve it. (1)

[...] a higher force for cutting of Zir [...] increases the damage to the diamond burs, resulting in a decrease of the total cutting depth. (1)

[...] higher force may cause more damage to super coarse burs, which may decrease their cutting efficiency over time. (3)



Optimized gear ratio for better removal rate

Cutting efficiency is maximized by the optimum ratio of torque and speed. Heavy-duty applications require additional torque for the recommended bur speed. A contra-angle handpiece with a transmission rate of 1:4 is an especially convenient solution, since it always provides the optimal bur speed of 160,000 rpm recommended by most bur manufacturers without having to change the standard setting of 40,000 rpm on the electric motor.

Extra Durable: Experience the Value

When cutting harder materials, conventional contra-angle handpieces are subject to considerable wear. Long downtimes and high maintenance costs are the result. In contrast, Synea Power Edition contra-angle handpieces are extra durable and feature an especially robust clamping system. They are less susceptible to mechanical failures and offer an incomparably longer service life of at least 20% compared to standard transmission instruments.

Solid



Extra robust chucking system for higher clamping force

With an unbelievable 20% increase in clamping force, the newly designed FG chucking system is made for heavy-load applications.

Chic and functional: New push-button design for easier bur change

Even rotary instruments designed for heavy-load applications show decreasing removal rate over time when cutting hard materials (1, 4). To keep up with cutting performance, rotary instruments need to be changed more frequently. Hence, you will appreciate the newly designed black push-button of the Synea Power Edition. It makes the bur change noticeably easier as forces are better distributed.

Quieter Operation: Hear the Difference

“The Synea Power Edition decreases the noise level in the operatory and creates a less intimidating environment for patients.”

Dr Robert Stanley, The Stanley Institute

Studies show that 40 hours of weekly exposure to levels at 80 dB for adults/75 dB for children can lead to degrees of hearing loss. (Ref: Safe listening devices and systems: a WHO-ITU standard)

Scientific findings

[...] cutting efficiency continually worsened over time due to the damage sustained by the burs and by debris accumulation. (4)

Bur cutting efficiency is maximized for all burs when limiting the cutting time of 3Y-TZP to 100 seconds with a new diamond bur. (3)

[...] it is recommended that, in order to cut a zirconia prosthesis, diamond burs with SC grains (in which the grain size is about 300 μm) should be used with a cutting force of 0.9 N and the bur should be replaced with a new one at certain intervals (i.e. after 10 min of operating time). (1)

Effortless Power: Experience the Difference



New head design and optimal ergonomics

For better bur guidance the head is placed slightly higher. With the optimized shaft design, a secure grip and a perfect balance is ensured, especially in combination with the small electric motors from W&H.

.....
 "Let the handpiece do all the work with optimal gear ratio. Less manual hand pressure with increased torque creates an effortless feel."

Dr Bobbi Stanley, The Stanley Institute

Multiple spray with high water flow for proper cooling

Spray droplets have higher moistening capabilities and achieve better cooling than a water jet. The bur also gets cleaned of debris more efficiently, which supports the overall cutting ability. In addition, the higher the coolant flow, the higher the cutting efficiency (3). With three enlarged nozzles smartly placed around the bur and a water flow of more than 50 ml/min, the Synea Power Edition provides an impressive cooling and cutting level. The integrated maintenance-free spray filter reliably prevents nozzle clogging and ensures a constant high-water quality.

All good things come in threes

With the special Synea 900-series, W&H has designed three extra powerful speed-increasing transmission instruments. The premium line of the Synea range – the Synea Vision – is complemented with the WK-900 LT, while the Synea Fusion portfolio is reinforced with the WG-900 A and the WG-900 LT.



Synea qualities at a glance

In addition to the extra robust design and the optimized gear ratio, this series of especially strong contra-angle handpieces features all the proven Synea qualities, such as:

- Ceramic ball bearings for smooth operation with less vibration
- Monobloc design for better hygiene
- HeatBlocker technology that keeps the push-button cool, to protect you and your patients from burns
- Compact glass rod for constant light quality and the optimal illumination of the treatment site (WK-900 LT/WG-900 LT)
- ScratchBlocker coating for long-term value retention (WK-900 LT)
- 36-month warranty (WK-900 LT) and 24-month warranty (WG-900 LT/A)

Power Edition

Powerful

Versatile:

“This handpiece is built for the toughest challenges, however, it can also be utilized as a multi tool for many other applications.”

Time Saver:

“An innovation that increases throughput by allowing a long, tough procedure to be completed faster, more efficiently and more effectively.”

Robust Design for ROI:

“Designed and built to last 20% longer than other handpieces. Allow this handpiece to do the toughest jobs and increase the ROI across all of your dental handpieces.”

Drs Robert & Bobbi Stanley
The Stanley Institute (North Carolina, USA)



Product name:	Synea Vision	Synea Fusion	Synea Fusion
Type:	WK-900 LT	WG-900 LT	WG-900 A
Head size:		Ø 10.7 mm	
Head height with bur (19 mm):		22.9 mm	
Rotary instruments:		FG bur	
Max. working part diameter:		Ø 2.5	
Max. length:		25 mm	
Transmission ratio:		1:4	
Max. bur speed:		160,000 rpm	
Spray:		3x (> 50 ml/min)	
Light (compact glass rod):	Yes		No
Light intensity:	25,000 lux		n. a.
Coupling:		ISO 3964	
Areas of application:	Removal of decayed materials, cavities and crown preparation, removal of fillings		
ScratchBlocker:	Yes		No
HeatBlocker:		Yes	
Warranty:	36 months		24 months



Bibliography



wh.com



Pictures are for illustrative purposes only. Additional equipment and accessories shown are not included as standard.

20576 AAE Rev. 000 / 17.07.2024
Subject to alterations

Manufacturer:

W&H Dentalwerk Bürmoos GmbH
Ignaz-Glaser-Straße 53, Postfach 1
5111 Bürmoos, **Austria**
t +43 6274 6236-0
f +43 6274 6236-55
office@wh.com
wh.com

Distribution:

W&H Impex Inc.
6490 Hawthorne Drive
Windsor, Ontario, N8T 1J9
t +1 800 265 6277 Within USA/Canada
t +1 519 944 6739 Outside USA/Canada
f +1 519 974 6121
wh.com/na